

DESCRIPTION:

AMC MODEL SWG-2DR/DT-IND-SMC A SINGLE POLE TWO THROW, REFLECTIVE OR ABSORPTIVE/NON-REFLECTIVE SWITCH MODULE WITH VERY LOW INSERTION LOSS, HIGH ISOLATION AND WITH INTEGRAL TTL DRIVER, DESIGNED FOR BROAD BAND OPERATIONS.

SPECIFICATIONS:

- FREQUENCY: 0.5 GHz TO 18 GHz
- INSERTION LOSS: REFLECTIVE: 2.5db
ABSORPTIVE: 3.5db
- ISOLATION: 0.5 GHz TO 2 GHz: 60db
2 GHz TO 18 GHz: 70db
- VSWR: REFLECTIVE IN/OUT: 2.0:1
ABSORPTIVE IN/OUT: 2.0:1
ABSORPTIVE OUT/OFF: 2.0:1
- SPEED: RISE: 10ns TYPICAL, 15ns MAX.
FALL: 10ns TYPICAL, 15ns MAX.
DELAY ON: 75ns TYPICAL, 100ns MAX.
DELAY OFF: 75ns TYPICAL, 100ns MAX.
- POWER INPUT: (CW)+20dBm (STANDARD), +10 dBm (HIGH SPEED)
- SURVIVAL POWER: 1 WATT CW, 10 WATTS PEAK 1 usec
- CONTROL: TTL LOGIC "0"= J1-J2 ON "1"= J1-J3 ON
- POWER SUPPLY: +5V @ 100 mA MAX.
-5V @ 75mA MAX.(RELECTIVE)
100mA MAX.(ABSORPTIVE/NON-REFLECTIVE)
- CONNECTORS:
RF: REMOVABLE SMA FEMALE
CONTROL: SMC
- SIZE: 1.10" (L) x 0.85" (W) x 0.38" (H)
- WEIGHT: 0.75 OUNCE TYPICAL

OPTIONS:

- SINGLE CONTROL WITH SOLDER PIN STANDARD
- IND-SP: INDEPENDANT CONTROL WITH SOLDER PIN (LOGIC "0" = ON "1" = OFF)
- SMC: SINGLE CONTROL WITH SMC MALE
- IND-SMC: INDEPENDANT CONTROL WITH SMC MALE (LOGIC "0" = ON "1" = OFF)
- 10M18: 10 MHz TO 18 GHz (INSERTION LOSS INCREASES BY 1.5dB AT 10 MHz AND 0.5dB AT 18 GHz)
- 100M18: 100 MHz TO 18 GHz (INSERTION LOSS INCREASES BY 1.5dB AT 100 MHz AND 0.5dB AT 18 GHz)
- 118: 1 GHz TO 18 GHz (NO CHANGE IN INSERTION LOSS)
- 218: 2 GHz TO 18 GHz (NO CHANGE IN INSERTION LOSS)
- 412: 4 GHz TO 12.4 GHz (NO CHANGE IN INSERTION LOSS)
- 618: 6 GHz TO 18 GHz (NO CHANGE IN INSERTION LOSS)
- 1218: 12 GHz TO 18 GHz (NO CHANGE IN INSERTION LOSS)
- 100M20: 100 MHz TO 20 GHz (INSERTION LOSS INCREASES BY 1.5dB AT 100 MHz AND 1.0db AT 20 GHz)
- 220: 2 GHz TO 20 GHz (INSERTION LOSS INCREASES BY 1.0db AT 20 GHz)
- 1020: 10 GHz TO 20 GHz (INSERTION LOSS INCREASES BY 1.0db AT 20 GHz)
- B01: -12V POWER SUPPLIES
- B02: -15V POWER SUPPLIES
- B03: REVERSE LOGIC "1"=ON "0"=OFF
- B04: DRIVERLESS, CURRENT CONTROLLED
- B05: HIGH SPEED, TURNON/TURNOFF 20 nsec MAXIMUM WHEN APPLICABLE OR OPTION HS (NOT AVAILABLE WITH SMC CONTROL)
- B06: HIGH POWER - SPECIFY CW POWER, PEAK POWER, PULSE WIDTH, DUTY CYCLE, RF FREQUENCY AND BANDWIDTH
- B07: CUSTOM DESIGNED PRODUCT- SPECIFY INITIALS OF CUSTOMER
- B08: LOW VIDEO TRANSIENTS - SPECIFY VIDEO BANDWIDTH
- B09: LOW INSERTION LOSS VERSION
- B10: HIGHER ISOLATION VERSION

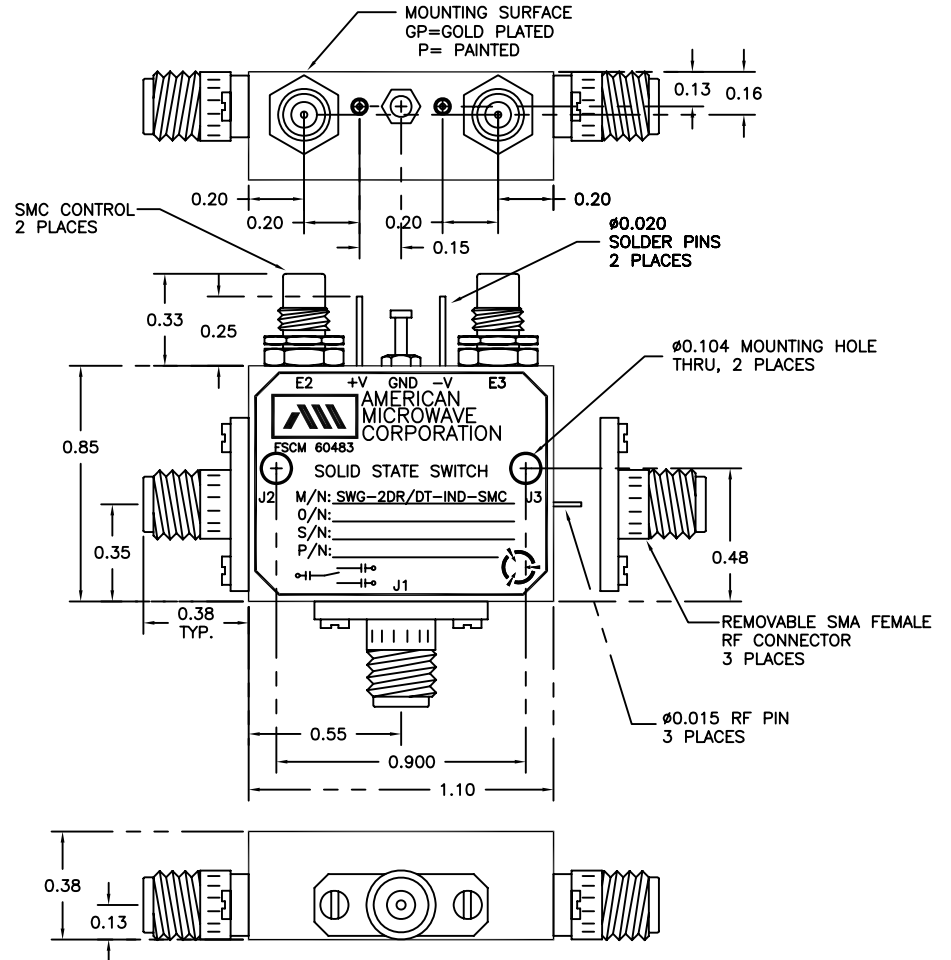
ENVIRONMENTAL RATINGS:

- TEMPERATURE: -55°C TO +85°C (OPERATING)
-65°C TO +125°C (STORAGE)
- HUMIDITY: MIL-STD-202F, METHOD 103B COND. B
- SHOCK: MIL-STD-202F, METHOD 213B COND. B
- VIBRATION: MIL-STD-202F, METHOD 204D COND. B
- ALTITUDE: MIL-STD-202F, METHOD 105C COND. B
- TEMPERATURE CYCLE: MIL-STD-202F, METHOD 107D COND. A

ALL DIMENSIONS ARE IN INCHES
TOLERANCES:
X.XX ±0.020
X.XXX ±0.010

NOTE: THE ABOVE SPECIFICATIONS ARE SUBJECT TO CHANGE OR REVISION

REVISIONS				
ZONE	REV.	DESCRIPTION	DATE	APPROVED
	A	ORIGINAL RELEASE	1/29/99	



NOTE:
DR=WITH DRIVER, REFLECTIVE
DT=WITH DRIVER, NON-REFLECTIVE/ABSORPTIVE

PART NO.		AMERICAN MICROWAVE CORPORATION FREDERICK, MARYLAND		
APPROVALS	DATE	TITLE		
DRAWN <i>WP</i>	1/29/99	PRODUCT FEATURE SWG-2DR/DT-IND-SMC REFLECTIVE OR NON-REFLECTIVE/ABSORPTIVE SOLID STATE SWITCH		
CHECKED		SIZE	FSCM NO.	DWG NO.
ISSUED		A	60483	100-4715-4
SCALE				REV. A
				SHEET 1 of 1